

# JACKSONVILLE MEDICAL CENTER

Jacksonville, Alabama



Population: 9,114 • Service Area: 31,000

Nestled in the foothills of the Appalachian Mountains in eastern Alabama and surrounded by wilderness areas of mixed pine and hardwood forests, the city of Jacksonville is well known as the "Gem of the Hills."



Cheaha Challenge

## THE HOSPITAL

Jacksonville Medical Center is an 89-bed facility, accredited by the Joint Commission on Accreditation of Healthcare Organizations (JCAHO). Located in North Calhoun County, the facility underwent a \$3.2 million renovation and expansion project in 2004, which included a new Emergency Department. Hospital services include a Medical/Surgical Unit, Obstetrics Unit, Inpatient/Outpatient Surgery, Cardiopulmonary Services, Lab/Reference Lab, Senior Care Unit, Intensive Care Unit, Same Day Surgery, Emergency Room, Imaging (MRI, CT, Nuclear Medicine, Mammography, Ultrasound) and Family Health Centers.

## THE COMMUNITY

Situated midway between Birmingham and Atlanta, the city of Jacksonville is conveniently located 16 miles north of I-20.

The community boasts a strong education system. The city schools rank 12th in the state academically. Jacksonville State University (JSU) serves more than 9,000 students on its 318-acre campus. This state-supported regional institution is the fifth largest university in Alabama and is renowned for its teacher education programs. JSU offers pre-professional programs in more than 40 academic areas, including medicine, business, law, criminal justice, nursing, social work, music and environmental management, as well as 18 graduate degree majors.



Nearby is the world-famous Talladega Superspeedway, the world's biggest and fastest motorsports facility, with seating for more than 143,000. Just down the road is the Anniston Museum of Natural History, which features open-air exhibits of mammals, dinosaurs and fossils, a 400-species bird collection, two Egyptian mummies, and a walk-through replica of an Alabama cave. Also included is a children's discovery room, nature trails, art exhibits, picnic areas and gift store. This nationally accredited museum was recently awarded status as an affiliate of the Smithsonian Institute, the first museum in Alabama to receive this designation.

## RECREATION

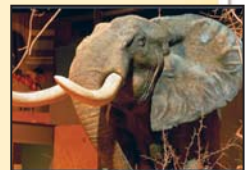
Here in the foothills of the Appalachian Mountains, wilderness areas are plentiful. Hikers and campers can enjoy the Cheaha National Wilderness Area, the Talladega National Forest and the Coosa River Basin. Cheaha State Park features the highest point in Alabama at 2,407 feet. The park also features eleven stone cabins, Cheaha Lake, a stone bath house, an Observation Tower and Bald Rock Group Lodge. The 33-mile Chief Ladiga Bike Trail is a converted railway line that runs right through the city. Jacksonville also has 200 acres of parks and numerous walking trails. There are four golf courses in the area, including Silver Lakes. Part of the Robert Trent Jones Golf Trail, it offers some of the most scenic and demanding golf in the Southeast.

## LOCAL POINTS OF INTEREST

- **Talladega Superspeedway** – the world's biggest and fastest motorsports facility, with seating for more than 143,000
- **Cheaha State Park** – features the highest point in Alabama (2,407 feet), with plenty of hiking and biking trails and beautiful mountain scenery
- **Silver Lakes** – an 18-hole championship golf course and part of the world famous Robert Trent Jones Golf Trail



Anderbolt Mills



Anniston Museum



Silver Lakes

## DISTANCE TO MAJOR CITIES

Birmingham, Alabama . . .	76
Huntsville, Alabama . . .	96
Atlanta, Georgia . . .	103
Chattanooga, Tennessee . . .	115



# JACKSONVILLE MEDICAL CENTER

1701 Pelham Road, South  
Jacksonville, Alabama 36265



## Hospital Services

### **EMERGENCY**

24-Hour Emergency Department  
24-Hour Imaging and Laboratory Services  
24-Hour Physician Coverage

### **SURGICAL**

Inpatient & Outpatient Surgery  
General Surgery  
Orthopedic Surgery  
Gynecological Surgery  
Ear, Nose, and Throat Surgery  
24-Hour Anesthesia Coverage  
Laparoscopy  
Endoscopy Services  
Pain Management Center

### **ACUTE CARE**

Infection Control  
Dietary and Diabetes Counseling  
Pain Management

### **INTENSIVE CARE**

Intensive Care Unit (5-bed)

### **DIAGNOSTIC IMAGING**

CT Scan  
MRI  
Nuclear Medicine  
Mammography  
Ultrasound  
Diagnostic X-Ray Services  
Bone Densitometry  
Echocardiogram

### **CARDIO PULMONARY**

Cardiac Stress Testing  
EKG and EEG  
Pulmonary Function Testing

### **REHABILITATIVE**

Outpatient Rehabilitation Services  
Physical Therapy

### **WOMEN'S HEALTH**

Obstetrics and Gynecology  
Labor and Delivery  
Surgical Suites  
Prenatal Care

### **MEDICAL SPECIALTIES**

Anesthesiology  
General Surgery  
Internal Medicine  
Obstetrics and Gynecology  
Orthopedics  
Pain Management  
Pediatrics  
Physical Rehabilitation  
Radiology  
Urology

### **OTHER**

Comprehensive Laboratory Services  
Diabetes Education  
Pharmacy  
Geriatric Psychiatric Unit (10 bed)  
Case Management/Utilization Review

### **SUPPORT**

Community Health Screenings  
Educational Services  
Nutritional Counseling  
Volunteer Services

